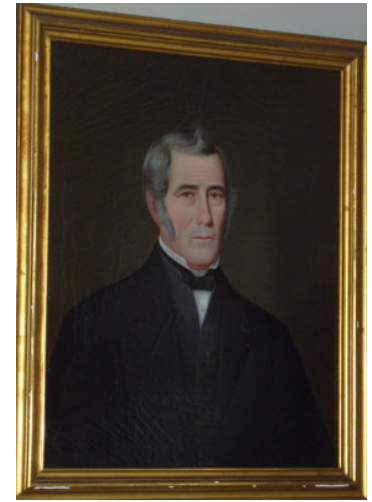


Arts & Entertainment

Portrait of "Captain" John Lucas, by Delos Cline Bell
Source: Burlington Historical Society

Burlington's history of art can be traced back directly to Delos Cline Bell, who was a famous portrait artist living in Upper Canada during the early 19th century. Delos was the son of Nathaniel Bell who was the first licensed medical doctor in Halton County (Burlington Historical Society n.d.). Aside from portraits, Delos also excelled in painting landscapes. As a young child, Delos sold his paintings to family friends to earn money (Turcotte 1989). His works of arts were so impressive that some of them are included in the directory *Early Painters and Engravers in Canada* by Russell Harper. Delos is best known for his three portraits of Sir John A. MacDonald. The paintings were showcased at the Royal Ontario Museum (Turcotte 1989).



Ireland House, 2168 Guelph Line, 4 views
Source: Burlington Historical Society



The Ireland House was built in 1837 by Joseph Ireland. This beautiful two-storey farmhouse had a unique parlour room providing an ideal location for celebrations and parties. For years, the Ireland House was the host to lavish garden parties and strawberry socials that attracted locals from around the area (Turcotte 1989). In 1928, the house hosted the 50th anniversary party for the Peer family of Guelph (Turcotte 1989). The large property at the Ireland House also hosted many

fundraising events, particularly for St. Johns Anglican Church where Joseph Ireland was a Board Member (Stewart, n.d). This type of social event was commonly held at Nelson Township's larger estates.

Another area of entertainment centred along the shore of Lake Ontario. When Benjamin Eager sold the Brant House – the former homestead of Captain Joseph Brant – to A.B. Coleman in 1899, it was turned into the Brant Hotel. Shortly after that, A.B. Coleman commissioned Harry Cuttriss to build the Brant Inn on the property to the east of the Brant House to serve as a country club.

Brant House Hotel, 1877
Source: Burlington Historical Society



The Brant House Hotel and the Brant Inn made the Burlington lakeshore the biggest resort area in the county. Recreational activities at the resort included: boating, swimming, playing croquet and riding horses (Burlington Historical Society n.d.). In 1917 the Brant House Hotel was expropriated from Coleman for use as a military hospital and nurses' residence. While the intention was that the property would be returned to Coleman's ownership, it remained in the hands of the Federal Government until it was sold into private hands and demolished in the 1930s. Coleman took to renovating his country club into the Brant Inn following the expropriation of the Brant House Hotel.

Brant Inn, ca. 1920
Source: Burlington Historical Society

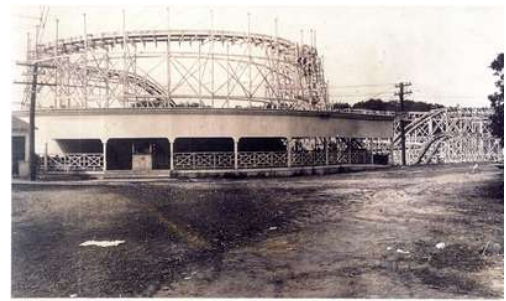


The Brant Inn décor was inspired by a ship's interior. The Inn had a large indoor dance floor and an outside dance floor that was known as the Sky Club and Lido Deck. In addition, the Inn had a restaurant, beauty salon and a barber shop (Burlington Post 2011). In essence, the Brant Inn was a one-stop entertainment paradise! In the early 1900's, entrepreneur John Murray Anderson was the entertainment coordinator of Brant Inn – under his guidance, the Inn became one of

North America's most successful nightspots (Burlington Post 2011). Prior to his employment at Brant Inn, Anderson worked as a talent agent hiring bands for local dance halls. In 1927, two years after the reconstruction of a fire damaged portion of the property, Anderson began to produce shows at the Brant Inn. He attracted some top acts to perform such as Benny Goodman and Louis Armstrong (Burlington Post 2011). In 1964, Anderson retired and sold the Brant Inn. The property was then bought by a developer who demolished the Brant Inn with plans to develop the land for condos. These plans did not get approved (Burlington Post 2011).

The Roller Coaster, LaSalle Park, Aldershot, 1920s
Source: Burlington Historical Society

Further down the lake shore, Aldershot was home to one of Burlington's first amusement parks. In the 1880s, George Midwinter operated Bayview, situated at Rock Bay near the shore of Lake Ontario. The park offered plenty of activities for one and all to enjoy including a merry-go-round, skating rink and track and field area where multiple sports were played. In addition to the park, the property was home to the Bayview Hotel which had a winter and summer bar, a pool room, restaurant, candy store and ice cream parlour (Machan 1997). LaSalle Park also offered amusement rides.



Today, Burlington has a plethora of options for entertainment. For the arts, Burlington has the Art Gallery of Burlington, a Performing Arts Centre and a Theatre for live plays.

Associated Properties:

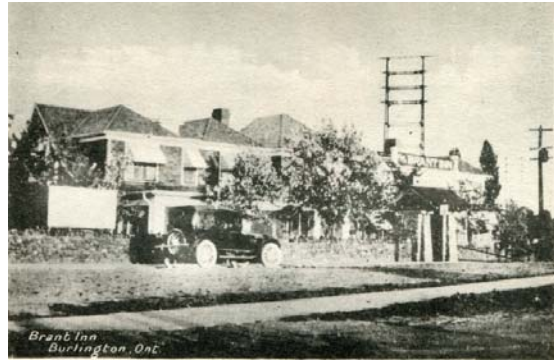
50 North Shore Boulevard “LaSalle Park” – LaSalle Park was originally a property owned by Alex Brown, a founder of Waterdown who built wharves on the property. It was later purchased by the City of Hamilton for use as a park named Wabasso. A bath house – now demolished – and pavilion were built on the property.

2168 Guelph Line “The Ireland House at Oakridge Farm” - This homestead was built by Joseph Ireland in 1836 just off the Guelph Line north of Upper Middle Road. Owned now by the City of Burlington, the home is a living museum where visitors can come experience what life was like on a 19th century farmhouse. This heritage designated home is one the oldest homes in

Burlington that contributes to the heritage significance of the area by being an example of an orchard farm.



Coleman's 'Country Club', ca. 1910
Source: Burlington Historical Society



Brant Inn, ca. 1918
Source: Burlington Historical Society



Brant Inn Fire, 1925
Source: Burlington Historical Society



Brant Inn, Eastern Section, 1927
Source: Burlington Historical Society



Brant Inn, ca. 1955
Source: Burlington Historical Society



Sky Club, Brant Inn (1950s?)
Source: Burlington Historical Society

Sources:

Burlington Historical Society

N.d. **Brant House Hotel, 1877.** Burlington Historical Society. Accessed online:
<http://vitacollections.ca/burlingtonhistoricalsociety/7496/data>

Burlington Historical Society

N.d. **Dr. Nathaniel Bell and his first wife, Sarah (Sally) Cline Bell.** Burlington Historical Society.
Accessed online at: <http://images.burlington.halinet.on.ca/53707/data?n=13>

Burlington Post

2011 **City's historic Brant Inn commemorated.** Accessed online at:
<http://www.insidehalton.com/opinion-story/2894681-city-s-historic-brant-inn-commemorated/>

Machan, C.

1997 **From Pathway to Skyway Revisited: The Story of Burlington**
Burlington Historical Society

Stewart, W.

N.d. **Help Preserve our past for future generations: Ireland House Oakridge Farm Burlington.**
Burlington Historical Society. Accessed online:
http://www.burlington.ca/heritagedirectory/data/2306712key/Guelph_Line_2168_01.pdf

Turcotte, D.

1989 **Burlington: Memories of Pioneer Days.** Burlington Historical Society.